

Class Placements 2017

Whilst teachers are fully focussed on finishing this year off for each of their students, school staff will begin to think about class placements for 2017 as this year winds up. We would like to offer parents the opportunity to offer any specific thoughts which they would like staff to consider when forming classes. Consideration of social, emotional, physical or academic factors from parents will support the knowledge that teachers have of each student.

Teachers will form classes on a range of factors with the main aim of having your child have a happy and productive future year of learning. If you would like to have your thoughts considered, the only way that this will take place is if you write a letter addressed to The Principal of Bilambil PS. These can be delivered via the front office or via email at bilambil-p.school@det.nsw.edu.au

Please feel free to talk to your child's current teacher about this but understand that only written correspondence will be formally considered. Please understand that this is not an invitation to choose your child's teacher for next year. Which teachers are teaching which years has not been finalised yet and no requests will be considered without appropriate supporting evidence.

Fantastic Fair

Regardless of the outcome of the day, school staff would genuinely like to thank the enormous efforts of all of the volunteers who have worked so hard to make the Bilambil Community Fair happen again for our unique community. It has been amazing to see the whole event come together. Well done everyone and enjoy the day!!

Annual Attendance Data

And the winner is... Kindergarten! Our quarterly attendance review shows that only Kindergarten has no students with less than 85% attendance for the year. Please understand that your child's attendance at school is important and our school target is to have an average student attendance rate over 95%. We look forward to seeing you all every day of each week!

Year 7 2018 Selective School Applications being called

Applications are now being called for any students seeking enrolment in a NSW government selective high school in 2018. Whilst the nearest selective school is a long way from Bilambil, Please contact Mr Mostert for more information if you are interested or would like any clarification.

External Validation

The school has submitted its final report for the External Validation process for NSW schools. This has been a massive amount of work but has allowed us to understand how our school is operating in a much deeper and more meaningful way than we were operating prior to this year. It has also allowed us to strategically plan for what we need to improve on into the future. The measure of success is compared against the School Excellence Framework, which is a robust document. We will have our final interview on Tuesday, 8 November 2016.

Kindergarten 2017 Orientation Program

This year's Orientation Program is up and running with much success. We anticipate 45 students starting in Kindergarten in 2017. This should mean that our enrolment will rise to the mid 320's so we will maintain 13 classrooms with 2 Kindy's and a composite K/1 class.

REGISTER NOW for 2017 Kindergarten



UP AND COMING EVENTS TERM 4 2016

● School items

● P&C Items

WEEK 4	
Thursday 3 November	• Stage 3 Assembly
Friday 4 November	• Sports Electives Week 4 Surf Groms & Tennis
WEEK 5	
Monday 7 November	• Canteen Sushi Day
Tuesday 8 November	• Kinder 2017 Orientation continues • Student School Banking
Friday 11 November	• Sports Electives Week 5 Surf Groms & Tennis
WEEK 6	
Tuesday 15 November	• Newsletter • Kinder 2017 Orientation continues • Interrelate Stage 3 • Student School Banking
Thursday 17 November	Aunty Peach Visiting Show
Friday 18 November	• Sports Electives Week 6 Surf Groms & Tennis
WEEK 7	
Monday 21 November	• Swimming Program • Canteen Sushi Day
Tuesday 22 November	• Kinder 2017 Orientation continues • Swimming Program • Student School Banking
Wednesday 23 November	• Swimming Program • Rock Orchestra Concert
Thursday 24 November	• Swimming Program
Friday 25 November	• Sports Electives Week 7 Surf Groms & Tennis

WEEK 8	
Monday 28 November	• Swimming Program
Tuesday 29 November	• Newsletter • Kinder 2017 Orientation continues • Swimming Program • Interrelate Stage 3 • Student School Banking
Wednesday 30 November	• Swimming Program • P&C Disco
Thursday 1 December	• Swimming Program
Friday 2 December	• Sports Electives Week 8 Surf Groms & Tennis
WEEK 9	
Monday 5 December	• Canteen Sushi Day
Tuesday 6 December	• Kinder 2017 Orientation afternoon Tea 3.15 to 4.00pm • Student School Banking
Friday 9 December	• Presentation Day
WEEK 10	
Monday 12 December	• Pink Stumps Day
Tuesday 13 December	• Year 6 "Big Day Out" • Newsletter • Student School Banking
Wednesday 14 December	• End of Year Concert
Thursday 15 December	• Class Parties • Reports home
Friday 16 December	• Year 6 Shirt signing / Farewell tunnel • Last day for 2016 for all students

Thank you Scripture teachers!

Scripture for 2016 finished this week and we would like to thank our six catholic and non-denominational scripture teachers who helped make this year's program a great success.

Scripture will resume in Term 2 in 2017.

Great to see you PBL Focus – Lining Up Protocols Improvements

Students have been working on their lining up as part of our "Be Safe, Be Fair, Belong" program. Students are showing super improvement in getting to lines on time, being a good audience member and speaking in soft tones. Keep up the good work kids!



Health
Northern NSW
Local Health District

School Health Nurse Visit

The School Health Nurse will be visiting the school shortly. If you have any major concerns with your child's development e.g. vision, hearing please obtain and complete a consent form from the school admin office and return asap. Please NO GENERAL HEALTH CHECKS.

Be Safe

Be Fair

Belong



STUDENT OF THE WEEK

	Term 4 Week 3	Term 4 Week 4
KB	Seth C	Zaili M
KL	Lylah H	Dante K
KM	Dempsey L	Lara T
1/2B	Grace G	Jago A
1/2H	Thomas M	Kobi T
1/2P	Kahu J	Mateo M
1/2T	Tayah K	Georgie M
3/4B	Alejandro M Danny R	Summer B
3/4H	Ethan S	Lauren F
3/4W	Lucas G	James F
5/6B	Aiden C	Natalie M
5/6J	Jade J	Livinia J Zac H
5/6M	Logan W	
Library	Tiani B	Mateo M
Music	Riley B	
Principal	Alyra J	

Write your name on your stuff!.. please....

Lots of our students love bringing their own toys in from home to show their friends or to play with at school. A reminder that the school does not encourage student's personal property at school as we cannot take any responsibility for this equipment, but if your child does bring their personal things into school, please make sure that their name is clearly marked on them.

Lost Property

There is an amazing amount of clothing left over from winter in our lost property box. This can be found near Computer Room at the stage end of the COLA. All clothes which had student's names in them have been returned but the massive amount left is currently unclaimed. At the end of this term, we will be distributing these clothes to either the used clothing uniform shop or charity organisations so please come to collect your clothes before then.



BRONZE AWARD

Term 4 - Weeks 3 & 4

1/2B	Jack B
3/4B	Zac T
3/4W	Thomas G
5/6B	Aiden C, Zak P



SILVER AWARD

Term 4 - Weeks 3 & 4

KB	Zaili M, Pearl S, Noah W
KL	Amy E
KM	Ava D, Sophia D
1/2B	Tyler M
1/2H	Zaiden B, Jazara B, Heaven B, Sommer C
1/2T	Jarah I, Annika R
3/4B	Siyah B, Ruby O
3/4H	Lauren F, Chloe H, Jasco W
3/4W	Chaya M, Kaelani S
5/6B	Lilly C, Lakiesha H



GOLD AWARD

Term 4 - Weeks 3 & 4

1/2H	Isabella C
5/6M	Kate B

Kiss 'n' Drop driver protocols

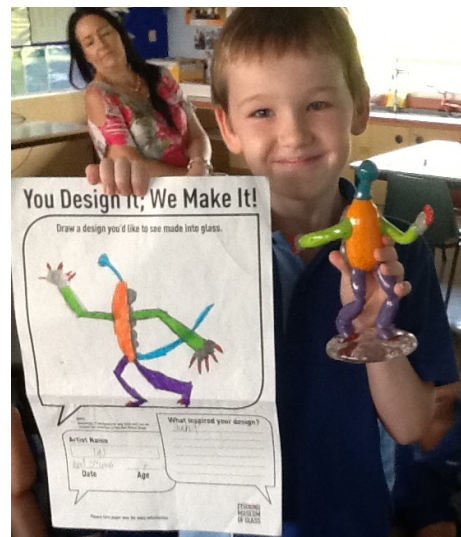
A reminder for all our parents and students to observe the road and parking rules around the school's top gate. Please understand that the crossing is not a full pedestrian crossing and cars are not required by law to stop so please make sure that if you are crossing the road, keep an eye both ways for any cars. Also, please do not park and leave your car in the Kiss 'n' Drop area in the mornings as there is parking for short term parking and too many cars move through our drop off zone each morning and afternoon to leave cars unattended. We all need to do our bit to keep our school safe!

Friendly Reminder

If you have simply overlooked payment of Music Mates fees or school fees, it would be greatly appreciated if you could finalise these fees before the school's end of financial year which is the 30th November. Thank you!

One of our favourite things is having our pets visit us! We have had rabbits, puppies, hermit crabs, fish and guinea pigs even a blue tongue lizard!

We have started Term 4 learning about the circus! We created a word bank of all the things that reminds us of the circus!



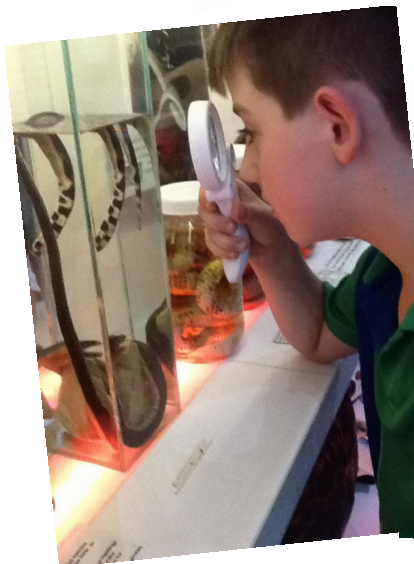
We always love spoiling Miss Henry and we were even busy doing art on our holidays and creating amazing things!



We always love spending time doing art on our holidays

Excursion fun

On the last day of Term 3 we enjoyed a day at Hastings Point getting close with sea life!





FRIENDS



"They understand each other completely even if not a single word is spoken"



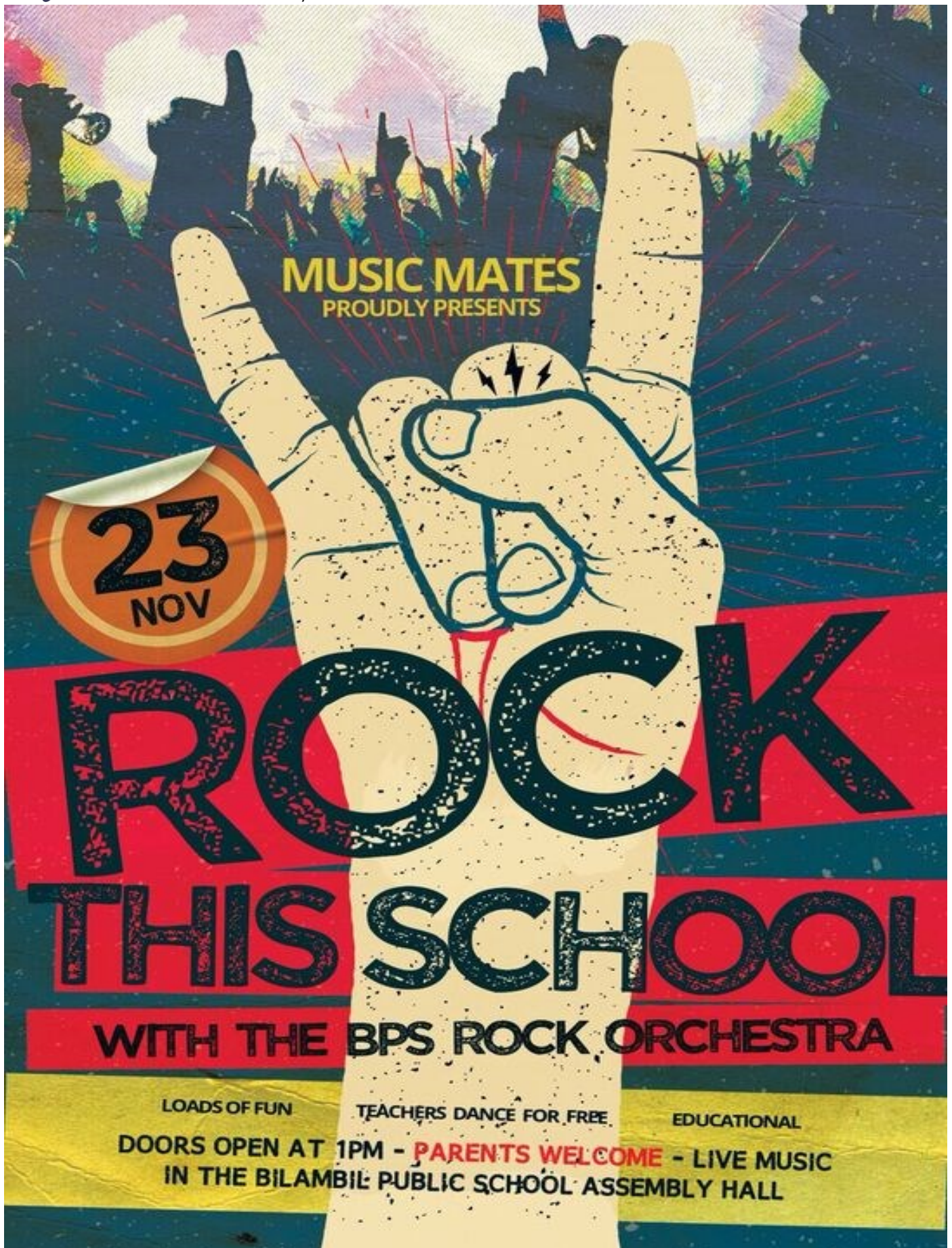
Lately we have been working on our art work for the school fair, which is looking quite awesome.



Please Note: We are still needing parent volunteers for our school fair! Please return your timetable to Miss Henry ASAP. Please note some time slots have been taken already.

Music Mates

The Rock Orchestra concert will be held on the afternoon of Wednesday, 23 November 2016. We are pretty sure it will blow you away so if your child is doing Rock Orchestra, please make sure you lock this into the calendar!



REMEMBRANCE DAY

New AFL Jumpers

Thanks to the support of AFL Queensland our school now has a set of great looking AFL jumpers.



Remembrance Day Service

On Friday 11th November, 2016 Bilambil Public School will conduct their Remembrance Day commemoration near the flag pole at 10.50am. Students not attending this commemoration will be supervised in the Library during this time.

Interrelate

The Interrelate program will commence on Tuesday 15 November 2016 for the Year 5 and 6 students. Parents and carers please return your child's permission note and payment asap.

Year 6 "Moving into the Teen Years" – \$35.00

Year 5 "Minding Me" – \$20.00

Band Bash at TRHS

We had a fantastic day! Erin and I have had a great time playing our flutes with Logan on the drums as a combined band with Cudgen, Centaur, Terranora, Tweed Primary and Tweed River High Schools on Tuesday 1 November 2016. Everyone was delighted with a delicious morning tea and we performed an amazing show for parents in the afternoon. Now that's what I call entertainment! By Zahli M



Daniel Morcombe
 FOUNDATION Inc.



On Wednesday, 19th October 2016 all students met Officer Rosie Garland from the child protection unit of the AFP and 'Elmo' the Daniel Morcombe Foundation mascot. This visit provided students with information on keeping them safe and learning to understand their body signals if they find themselves in an unsafe situation. We raised \$328.50 which goes to the Daniel Morcombe Foundation.

Parents and carers please have a look at the following website

<http://www.danielmorcombe.com.au/> where you can access information on the free safety app.

Students time is running out

Just a reminder to our Bilambil students to get your Fair competitions in. Entry forms for all competitions are available at the admin office. Each competition comprises three age categories:

Infant Kindergarten to Year 2

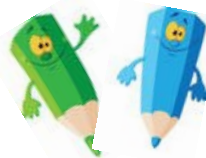
Intermediate Years 3 and 4

Senior Years 5 and 6

Student Colouring Competition

Student Photo Competition

Student Bake Off Competition



Bilambil Community Preschool & OOSH (next to Bilambil Public School)

Out of School Hours [OOSH] and Vacation Care for your family
 Monday to Friday 6.30am - 6.30pm
 VACATION CARE also available on pupil free days

Preschool 9am-3pm for 3-5yr olds
 Waiting list for 2017 & 2018 NOW OPEN

Please phone or pop in to discuss enrolling your family



Ph: 5590 7722



kelly@bilambilpreschooloosh.org

bilambilpreschooloosh.org

Kingscliff TAFE Cudgen Road



Thursday 17 November 2016

9.30am - 7.00pm (EDST)

Turn your passion into a career

Explore your career options through interactive demonstrations and be inspired by our graduating students! Discover more at the information sessions held by our talented teachers.

The SEA FM Sea Cruiser will be broadcasting live from 10am.

1300 628 233
northcoasttafe.edu.au





Bilambil

PUBLIC SCHOOL
P&C ASSOC. INC.

Term 4 - Week 4, 3 November 2016

Next P&C Meeting

Save the date!

Date: Wednesday, 23 November 2016

Time: 4.30pm (following the Fair wrap up meeting which commences at 3.15pm)

Sushi Days

The canteen now has Sushi Days on the 2nd and 4th Monday of each month!



P&C Treasurer

P&C are still looking to fill our Treasurer position on a more permanent basis.

Please contact the P&C if you interested.

bilambilschoolpc@gmail.com

Canteen Menu's

Canteen menu can be located on the P&C uniform shop website - www.bilambilpc.org, SchoolStream App (under P&C information), on the Bilambil PS website or alternatively you can contact the office for a hard copy!

Don't forget to like our Facebook page for up to date information!!



You can find us at:

<https://www.facebook.com/bilambilpublicschoolpc/>

P&C Disco

Save the date!

Wednesday, 30 November 2016.

More details to follow!



ONLINE UNIFORM SHOP 24/7

Bilambil Primary School
P&C Association
www.bilambilpc.org



Or visit our Uniform Shop at
School during these times

Monday
Wednesday
Friday
8.30 - 9.00am



CANTEEN VOLUNTEER ROSTER

If you have some spare time and would like to assist in the canteen on this roster, please email the P&C with your preferred day
bilambilschoolpc@gmail.com

Date	Volunteer 1	Volunteer 2	Volunteer 3	What's on!
Friday 4 November	Lyn	Gay	HELP NEEDED	
Monday 7 November	Kaye	Eleisha & Crystle	HELP NEEDED	Sushi Day
Wednesday 9 November	Lyn	Gay	Carmen	
Friday 11 November	Lyn	Gay	HELP NEEDED	

DON'T FORGET – You get P&C Dollars for every hour volunteered in the canteen. These dollars can be used in the canteen or towards uniform purchases (limits apply).



WOW! Only 7 Days to go, come & enjoy the fun!

Raffle Tickets

A huge thank you to all the families who have already got their RAFFLE TICKETS in! What a great start!

If anyone would like additional books please contact us and we will send you out another book, alternatively pop into the office and grab a book!

PLEASE NOTE: THERE WILL BE A PRIZE FOR THE CLASS THAT SELLS THE MOST TICKETS! SO GET SELLING!

Raffle will be drawn on Fair Day - Saturday 12 November 2016

Volunteers

We still need more volunteers to man stalls for the Fair. If you can help please send us an email bilambilschoolp.c@gmail.com

You'll have fun and get a free meal ticket for lunch too!

In response to feedback from the 2014 Fair we are offering more food outlets but this also means we need more help, if you can't commit in advance but find on the day you are able to help out please find a coordinator or go to the sign on stage area and we will put your skills to work!

Don't forget to talk to your child's teacher to find out more about how you can help on your child's class stall!

Helpers needed at school everyday of the week before the Fair. If you have a few hours to spare call Anita the Fair Coordinator on 0422 369 276. She can organise a time for you to pop in for a cuppa, chat and help out.

Ride Bands

Ride Bands can be ordered at the reduced rate of \$25.00 until Wednesday, 9 November 2016.

Competitions

Don't forget to get your entries in for the photography competition, colouring competition and masterchef competition! Prizes will be awarded for each competition!

Online Auction

Don't forget to check out the online silent auction site – <http://www.biddingowl.com/auctions.cfm> New items will be added to the site between now and the Fair day! Check out KB and 1/2H's awesome artworks and while you are there make a bid!

Calling all Bakers

We will be holding a cake stall on the day of the fair and we need baked goods donated! Let us know if you can help out by sending us an e-mail or dropping into the canteen (Monday, Wednesday or Friday) and talk to Danelle our canteen manager about how you can help! We will have cake boxes for collection at the office or canteen for anyone that wishes to use them!

Prize/Silent Auction Donations

We still need donations from families and the community to use as prizes, If any of our families have a business or would like to contribute please forward vouchers, prizes or donations to the school!

Final Call for Donations

We are still accepting all donations however we are still really in need of :

- ▶ **Chocolate Bars** (150-250g or 350g)
- ▶ **Cans of Soft drink/Bottled Water**
- ▶ **Coloured Hair spray**
- ▶ **Helium Balloons**
- ▶ **Shopping Vouchers**
- ▶ **White Elephant Stall Items** (No electrical please)





"We're going to the Bilambil Fair, fair soon, fair soon.... and we're going stay all day long!"

PREORDERED TICKETS

Ride Bands, Value Tickets & Showbags

To speed things up this fair we have a designated area for you to collect you pre ordered ride bands, value tickets and showbags.

Between 9.30 and 11.00am you can proceed to the pre order stand near the Stage 1 classrooms to collect your ride bands, value tickets or showbags.

Please note It is a requirement of the ride band company that ALL ride bands must be securely fastened on the wrist by a Fair volunteer. When collecting ride bands please ensure you have each child with you or we will not be able to issue the ride band and you will need to come back.

What to help?

If anyone is interested in helping with the Fair in any way, please contact Fair Coordinator, Anita Johnson on 0422 369 276 or email bilambilschool.pc@gmail.com for more information!

Bilambil Community Fair
Saturday, 12th November 2016
10.00am – 3.00pm

Please bring your family and friends to come along and enjoy a fun filled family day at our Fair.
Lots of activities for all.

A huge thank you to the families and friends of Bilambil Public School for your enthusiastic contributions so far!
Please keep it coming!

Needed to Borrow

If anyone has the following items and are happy to loan them for the day, it would be greatly appreciated.

Please clearly mark items with your name and contact number so items can be returned on completion of the fair.

Gazebos (3x3m)



Trestle Tables





Your local

Families

Gold Coast

magazine

f M: 0451 675 600 W: www.familiesmagazine.com.au/
E: EditorGoldCoast@nullfamiliesmagazine.com.au

K KATE NUTT
N photography

f Contact Kate directly via
Email: info@katenutt.com or
Mobile: [0421 274 796](tel:0421274796)



EARLY LEARNING CENTRE AND PRESCHOOL



BILI KIDS EARLY LEARNING CENTRE AND PRESCHOOL

P: 07 5590 9345 **F:** 07 5590 9347

A: 24 Buenavista Drive, Bilambil Heights NSW 2486

E: info@bilikids.com.au www.bilikids.com.au



24/7 Fitness Club



8-9 / 112-114 Minjungbal Drive, South Tweed Heads, NSW 2486

T: 07 5523 3438 E: membership@tweedfitnessclub.com.au



Thank you to our
Bilambil Fair
sponsors, your
valued support is
greatly appreciated
by the Bilambil
Public School
Community.

Bilambil Community Fair - Bilambil Public School P&C Assoc. Inc ABN: 98 949 128 209 A: 418 Bilambil Road, Bilambil NSW 2486

Contact: Anita Johnson M: 0422 369 276 E: bilambilschool.pc@gmail.com W: www.bilambil-p.school.nsw.edu.au F: www.facebook.com/bilambilpublicschoolpc